

HP and Compaq Desktop PCs - BIOS Settings for the Alvorix Motherboard

 [Using the BIOS setup utility](#)

 [Main menu settings](#)

 [Advanced menu settings](#)

 [Power menu settings](#)

 [Boot menu settings](#)

 [Exit menu settings](#)

Using the BIOS setup utility

The Basic Input Output System (BIOS) is responsible for enabling the hardware system on your computer when the computer is turned on. The BIOS Setup Utility makes it possible to change and store system configuration settings such as: enabling and disabling onboard components, setting the boot sequence for the system, and adjusting power management support.

To open the BIOS Setup utility, turn on the computer and immediately press the **F10** key repeatedly, about once every second, until the BIOS setup utility screen opens.

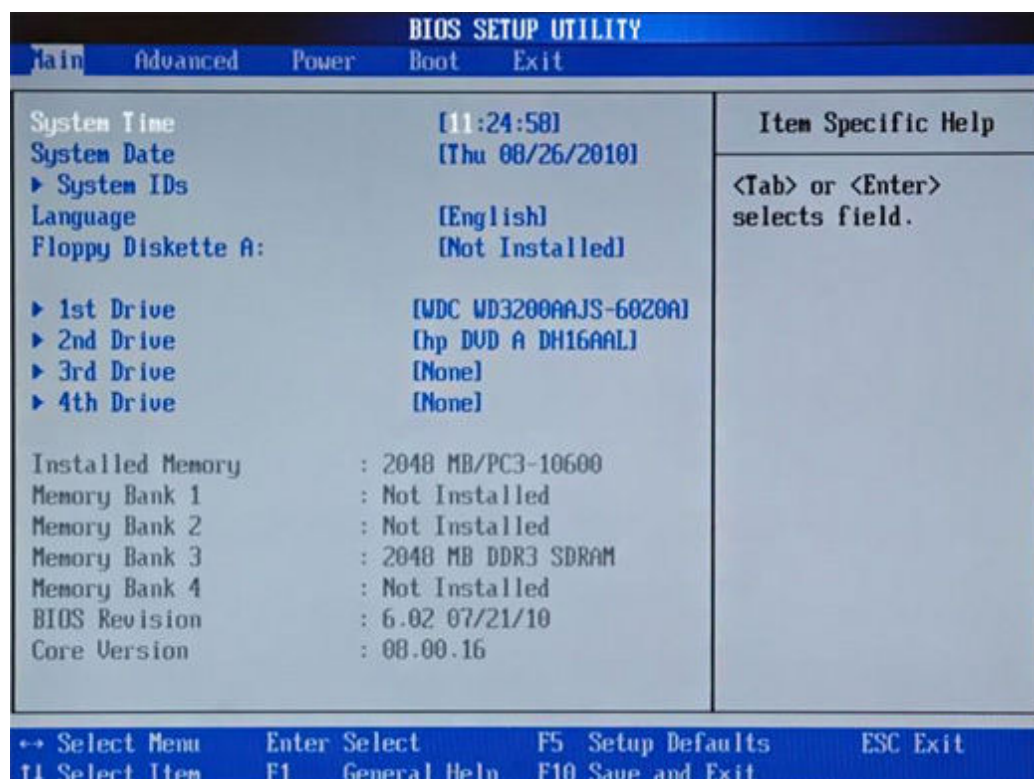
Choose menu screens by pressing the left or right arrow keys. Use the up or down arrow keys to move up or down through the list of items on a menu screen. Press the **Enter** key to select an item. For certain items, pressing the **Enter** key opens a submenu. After you have selected a menu item, use the arrow keys to modify the settings. Press the **Esc** key to exit from a submenu. Help is shown on the right side of the screen.

CAUTION:

Information stored by the Setup program is essential and changing certain settings can render your system unusable (until the BIOS is reset). BIOS settings should not be changed unless you are certain the change does not negatively impact the system.

Main menu settings

Figure 1: Main menu screen



The following table shows the values and settings for the Main screen menu:

NOTE:

Device names and their settings shown in the table may vary.

Main menu	Settings or displayed information
System Time	Displays Current time in HH:MM:SS format.
System Date	Displays current date in Ddd, MM/DD/YYYY format
System IDs	Click to open the System IDs submenu, which displays information such as the Product Name, Serial Number, SKU Number and Build ID.
Language * This sets the language used by	English Français

Main menu	Settings or displayed information
the BIOS Setup Utility only, not Windows.	Español Japanese Português
Floppy Diskette A	Disabled 1.44MB 3.5" Not Installed
1st Drive, 2nd drive, etc...	If a drive is installed and recognized, the name of the drive displays. Otherwise, None is shown. Click the name of a drive, to open the drive submenu (see Drive Settings table).
Installed Memory	Displays the total amount of RAM that the system is able to recognize.
Memory Bank 1, 2, etc...	Displays the amount of RAM installed in the corresponding DIM socket.
BIOS Revision	Displays the current BIOS revision number and date the BIOS was revised.
Core Version	Displays BIOS Core version number.

Drive Settings submenu (from main menu)	Settings
Port Configuration	Enabled Disabled
Capacity	Displays size of drive.

Drive Settings

submenu (from main menu)

Settings

Transfer Mode

Displays type of transfer mode required by the drive.

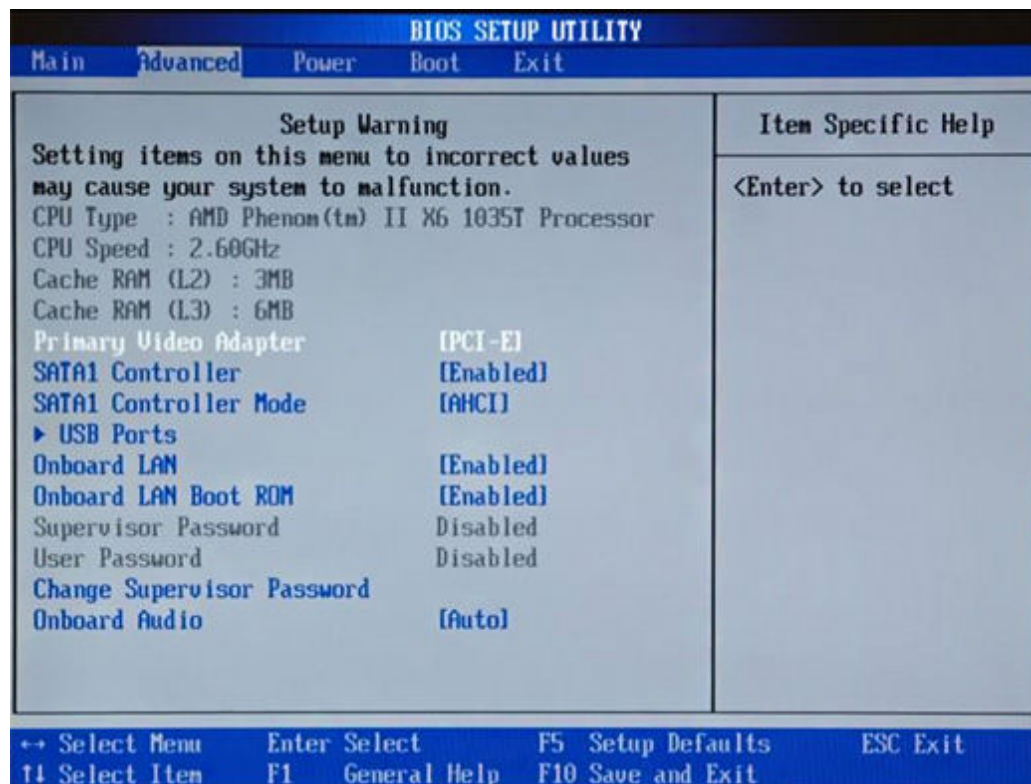
SMART Support

SMART diagnostics on the hard drive to test for errors. SMART is useful as an early detection method for determining if a hard drive is failing. Press Enter to open the SMART menu and run the following tests:

- SMART Status check
- SMART Short Self-test
- SMART Extended Self-test (This test can take over an hour to complete).

Advanced menu settings

Figure 2: Advanced menu screen



The following table shows the values and settings for the Advanced screen menu:

NOTE:

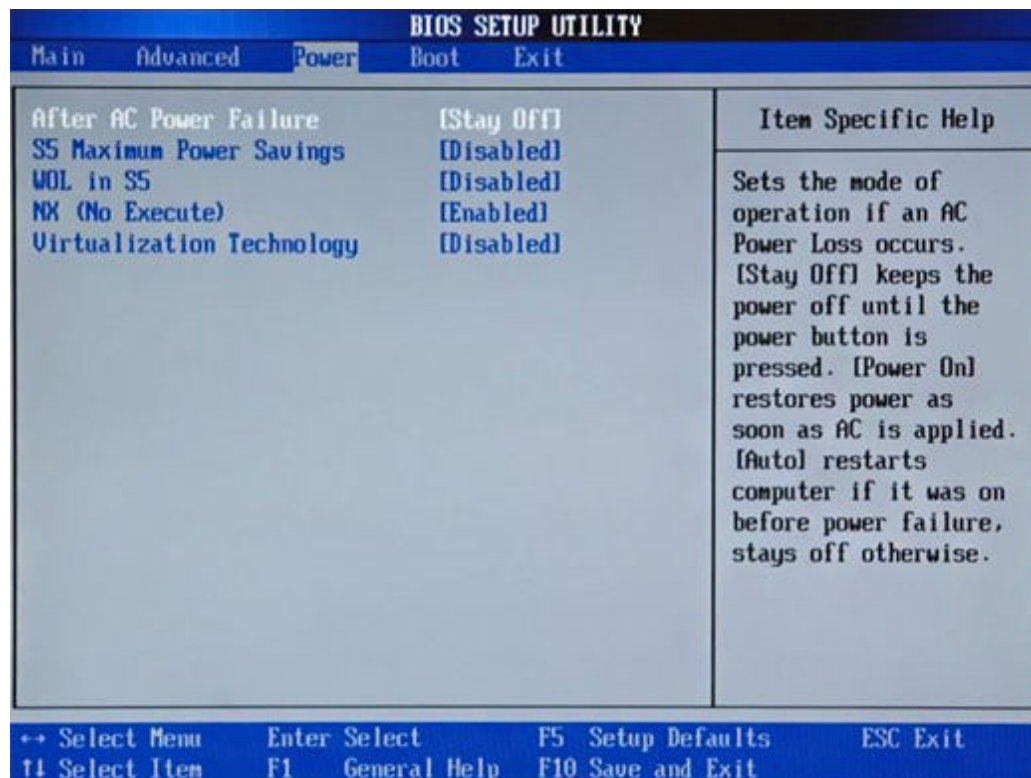
Device names and their settings shown in the table may vary.

Advanced menu	Settings or displayed information
CPU Type	Displays the name and type of processor.
CPU Speed	Displays the speed of the processor.
Cache RAM (L2)	Displays the amount of level 2 cache memory.
Cache RAM (L3)	Displays the amount of level 3 cache memory.
Primary Video Adapter	PCI-E Onboard
SATA1 Controller	Disabled Enabled
SATA1 Controller Mode	IDE AHCI
USB Ports	Opens the USB Ports submenu, listing the ports on the computer and whether each is enabled.
Onboard LAN	Disabled Enabled
Onboard LAN Boot ROM	Disabled Enabled

Advanced menu	Settings or displayed information
Supervisor Password	Disabled Enabled * To change this setting, see Change Supervisor Password.
User Password	Disabled Enabled * To change this setting, see Change User Password.
Change Supervisor Password	Select to enter a password. * Entering a password enables the Supervisor password and allows you to set a User password. Pressing Enter with no password disables the Supervisor password.
Change User Password	Select to enter a password. * This setting displays only after the Supervisor password has been set. Entering a password forces everyone to enter this password when they try to open the BIOS setup utility in the future. Entering no password disables the user password and allows anyone to enter the BIOS without a password.
Onboard Audio	Auto Disabled (use this setting if an audio card is installed) Enabled

Power menu settings

Figure 3: Power menu screen



The following table shows the values and settings for the Power screen menu:

NOTE:

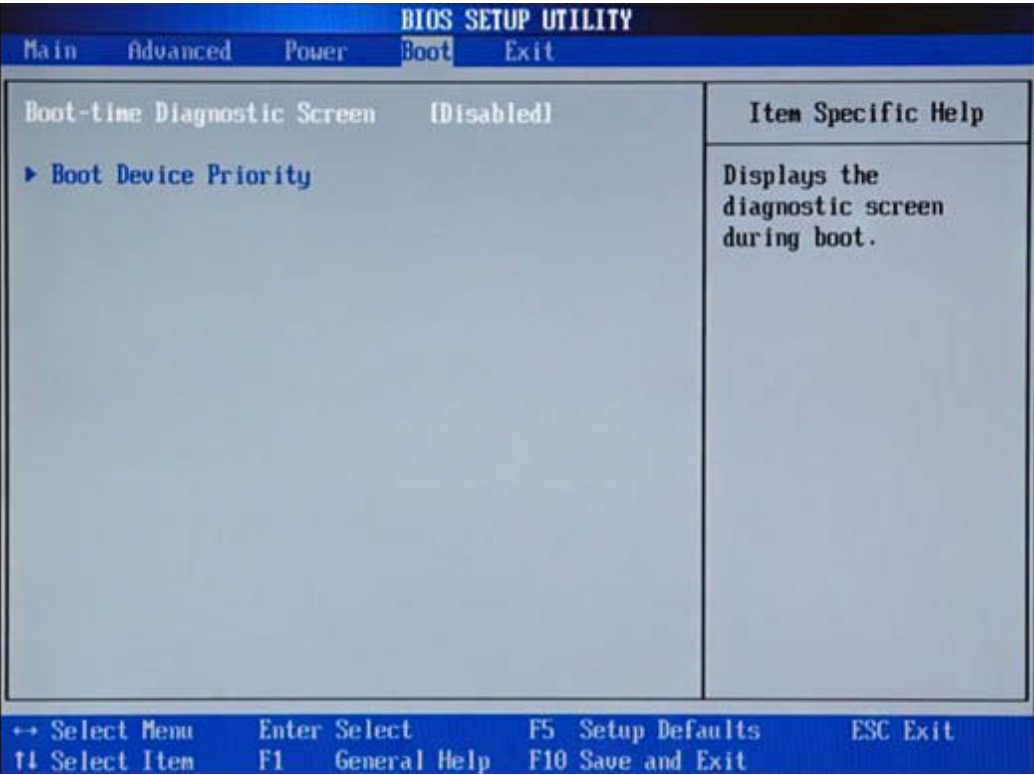
Settings shown may vary.

Power menu	Settings or displayed information
After AC Power Failure	Stay Off Power On Auto
S5 Maximum Power Savings	Disabled Enabled
WOL in S5	Disabled Enabled

Power menu	Settings or displayed information
NX (No Execute)	Disabled Enabled
Virtualization Technology	Disabled Enabled (Enable this feature if required by virtualization software).

Boot menu settings

Figure 4: Boot menu screen



The following table shows the values and settings for the Boot screen menu:

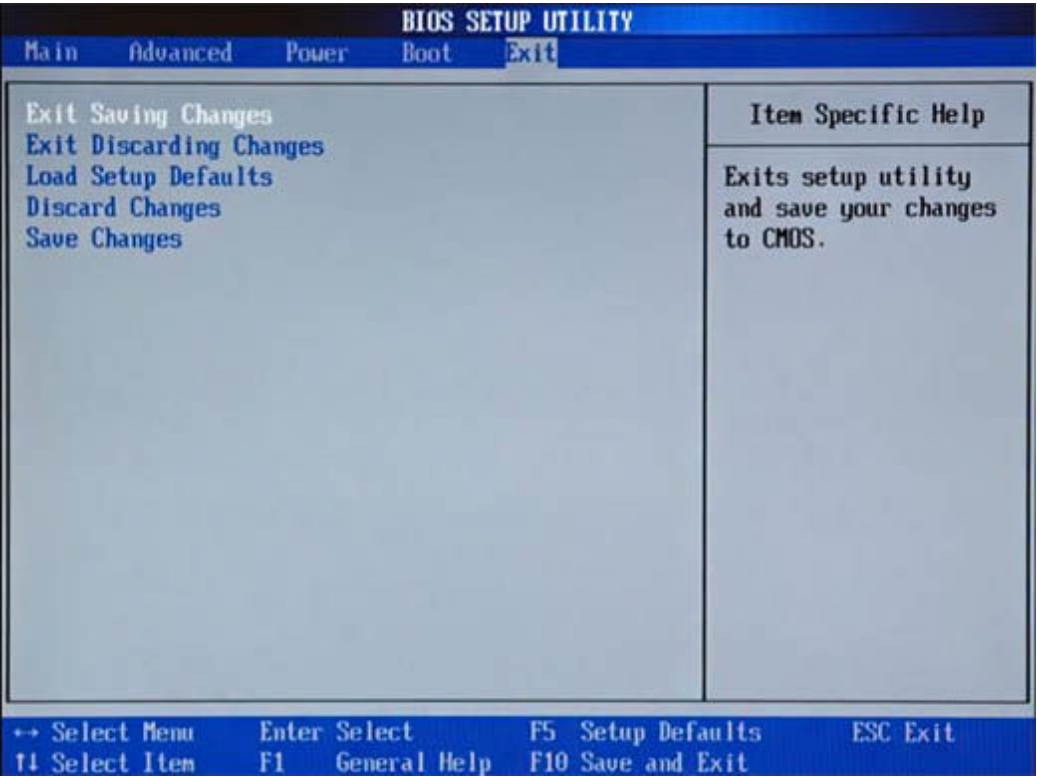
NOTE:

Settings shown may vary.

Boot menu	Settings or displayed information
Boot-time Diagnostic Screen	Enabled Disabled * Enabling this function replaces the HP or Compaq logo screen with a boot screen that quickly displays startup status messages.
Boot Device Priority: 1st Boot Device 2nd Boot Device 3rd Boot Device 4th Boot Device	Selecting Boot Device Priority opens a submenu to select the order of the types of bootable devices checked by the system. That is, if the CD-ROM group is selected as the 1st Boot Device, then the system will check the CD/DVD drive first to see if it contains any bootable discs. A device group will display Not Installed if there are no devices of that group installed in the system. If a device is available, you can enable or disable the group. Device groups are: <ul style="list-style-type: none">● CD-ROM Group● HDD Group● Floppy Group● Network Group

Exit menu settings

Figure 5: Exit menu screen



The following table shows the values and settings for the Exit screen menu:

NOTE:

Settings shown my vary.

Exit menu selections	Function
Exit Saving Changes	Saves all changes made in the other screens and exits the BIOS setup utility.
Exit Discarding Changes	Exits without making any changes to the BIOS.
Load Setup Defaults	Restores any changes that were made to the original default values.

Exit menu selections	Function
Discard Changes	Removes any changes that were made to the BIOS for this session. The BIOS Setup Utility remains open.
Save Changes	Saves any changes that were made to the BIOS for this session. The BIOS Setup Utility remains open.